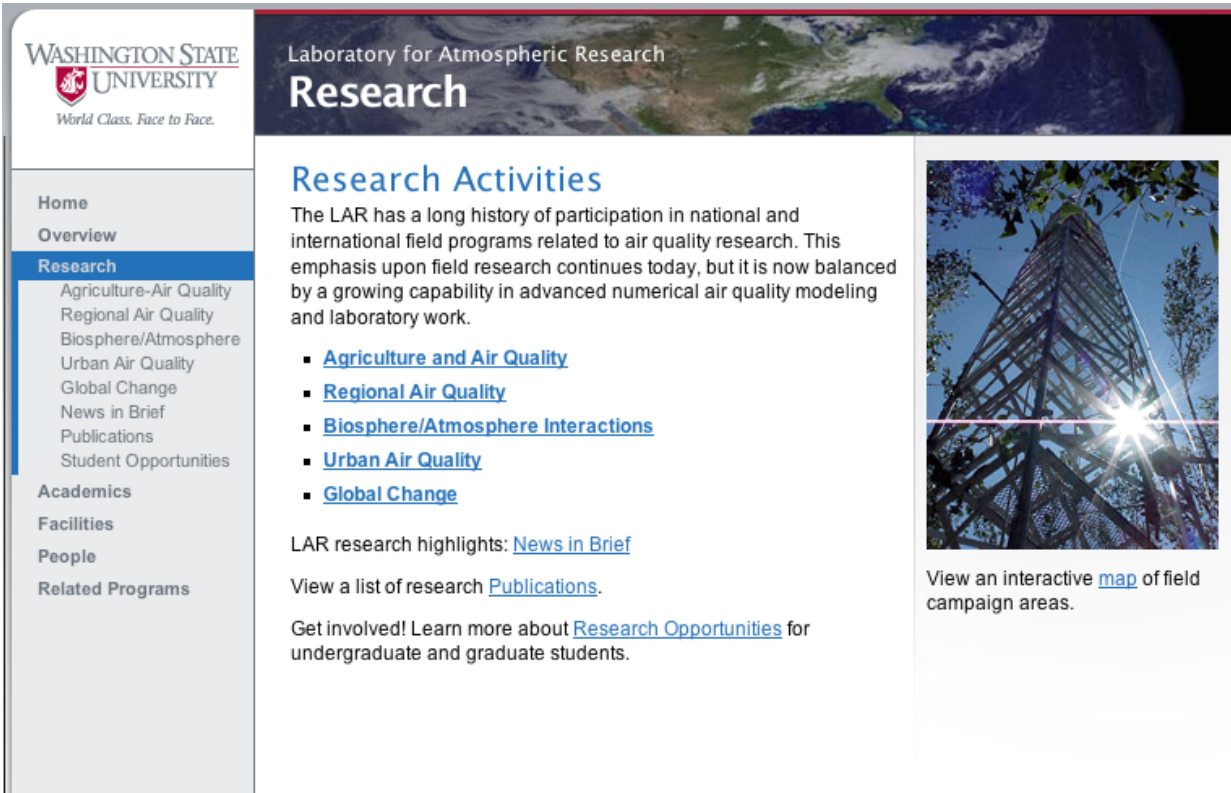


Serena Chung

Ph.D 2004 Caltech

postdoc Nov 2004-Dec 2006
NOAA Aeronomy Lab
Boulder, Colorado

2007-present:
Research Assistant Professor
Laboratory for Atmospheric Research
Department of Civil & Environmental Engineering
Pullman, Washington



WASHINGTON STATE UNIVERSITY
World Class. Face to Face.

Laboratory for Atmospheric Research
Research

Research Activities

The LAR has a long history of participation in national and international field programs related to air quality research. This emphasis upon field research continues today, but it is now balanced by a growing capability in advanced numerical air quality modeling and laboratory work.

- [Agriculture and Air Quality](#)
- [Regional Air Quality](#)
- [Biosphere/Atmosphere Interactions](#)
- [Urban Air Quality](#)
- [Global Change](#)

LAR research highlights: [News in Brief](#)

View a list of research [Publications](#).

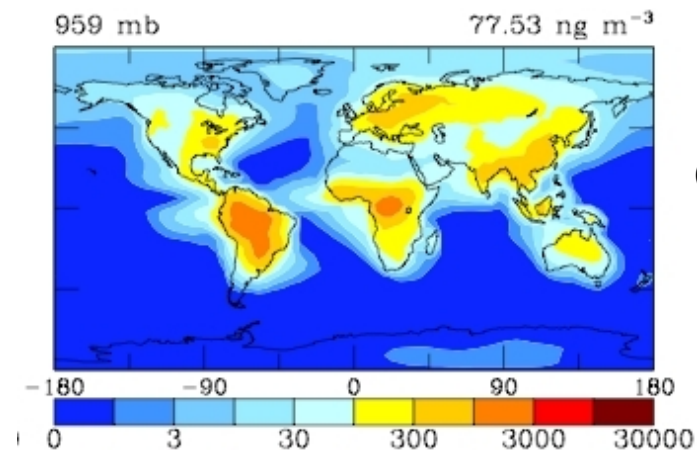
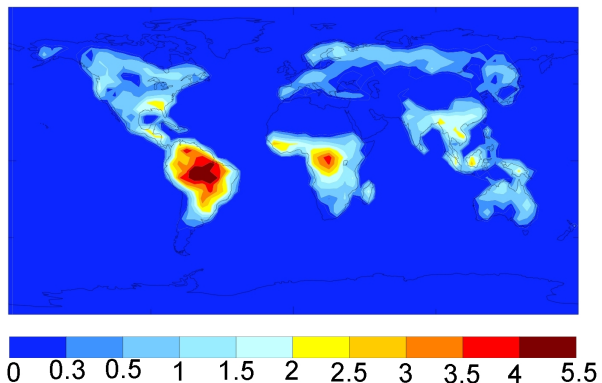
Get involved! Learn more about [Research Opportunities](#) for undergraduate and graduate students.

View an interactive [map](#) of field campaign areas.

<http://www.lar.wsu.edu/>

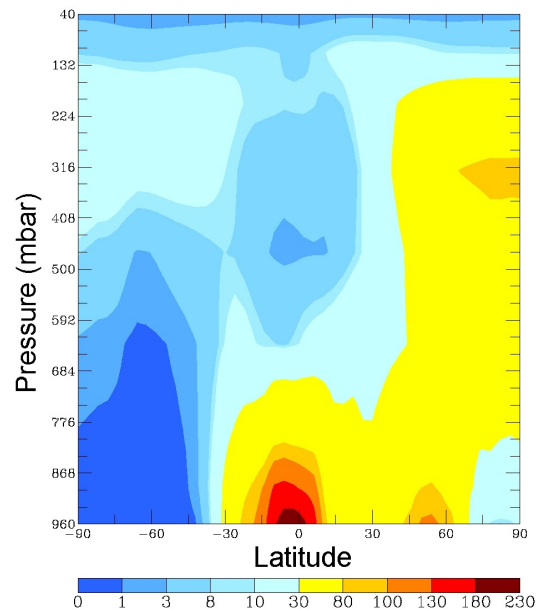
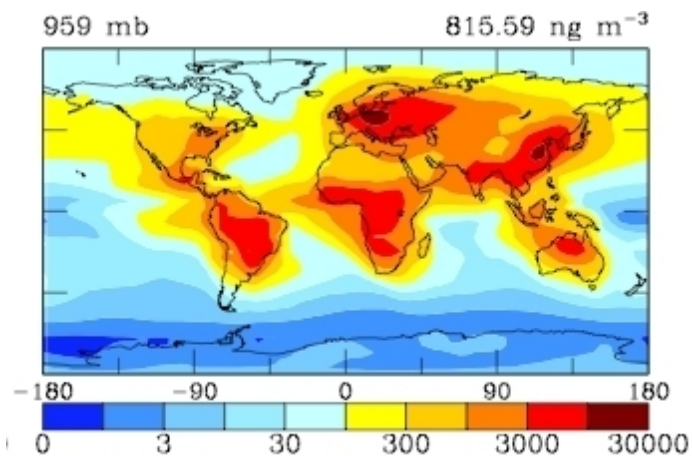
Global Modeling of Biogenic SOA

Monoterpene Emissions (g C m⁻² yr⁻¹)



SOA (ng m⁻³)

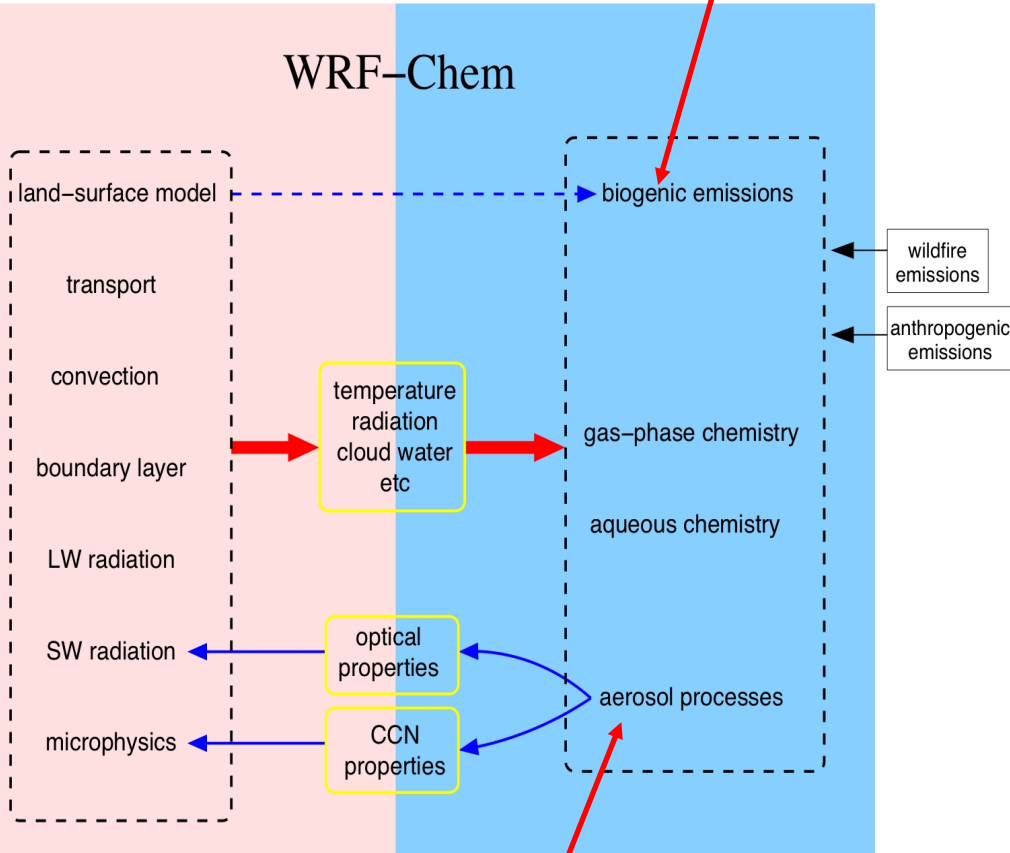
Primary OA (ng m⁻³)



SOA (ng m⁻³)

Mesoscale Aerosol-Radiation Interactions

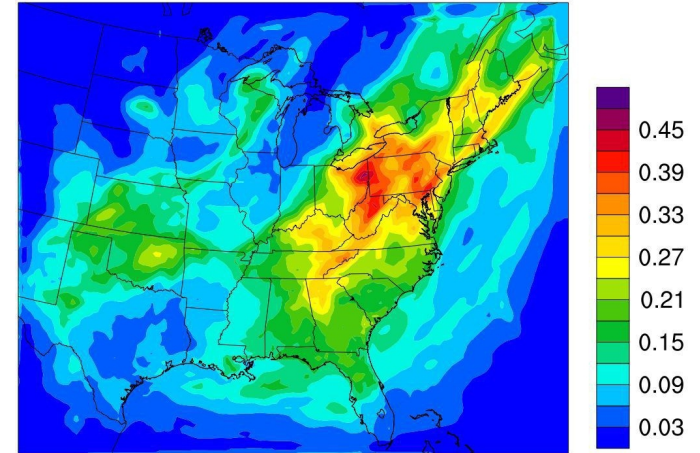
Currently, updating to MEGAN



Currently, practically no SOA

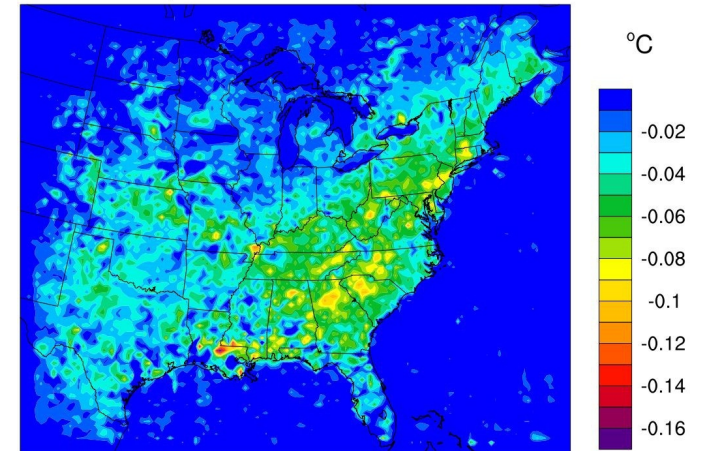
Aerosol Optical Depth

07/14/04-07/29/04, 16-20 UTC



ΔT @2meter

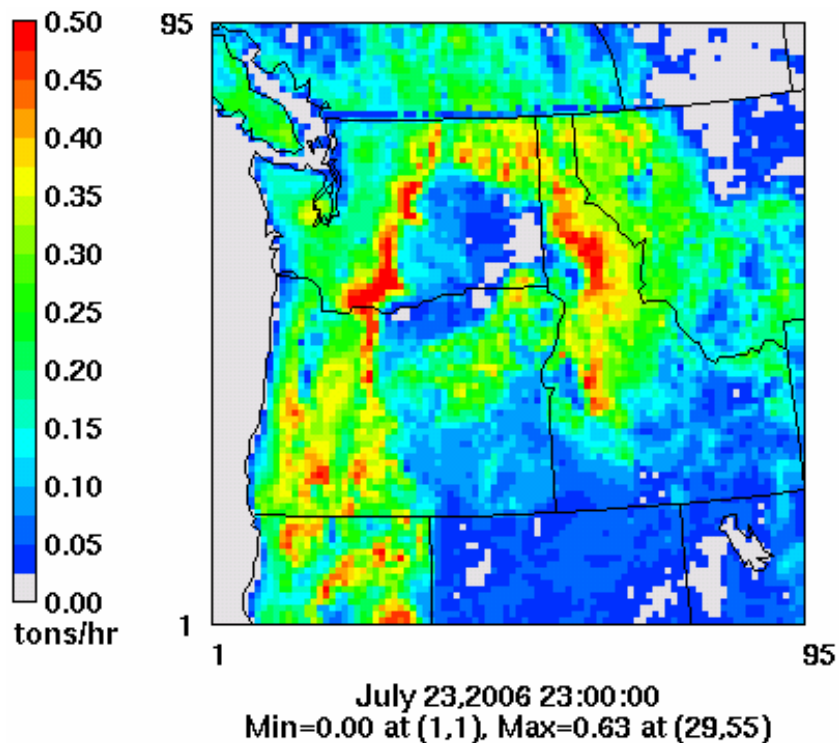
07/14/04-07/29/04, 16-20 UTC



AIRPACT-3 Daily Forecast System for PNW

www.airpact-3.wsu.edu

BEIS3
Monoterpenes
Emissions



CMAQ
Biogenic
SOA

Layer 1 CTM

